

Attn: Computer Science and Informatics Students

Applied Deep Learning

Fall **2019**

CSCI-C 690

CSCI-C 490

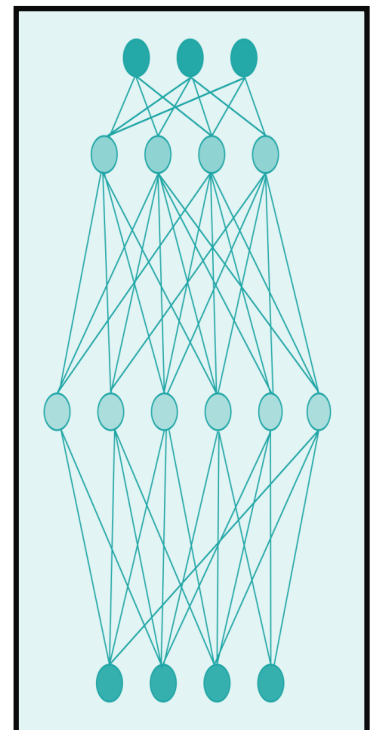
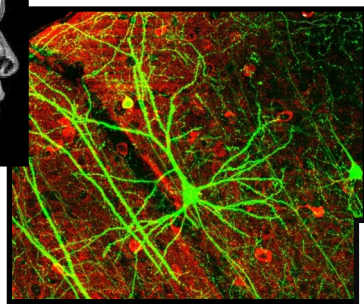
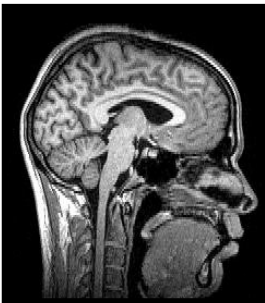
CSCI-I 400

Instructor: Dr. James Wolfer (jwolfer@iusb.edu)

Prereq: Math-M 30I, CSCI-C 243 or INFO-I 308 or CSCI-A 594.

When: Monday & Wednesday 5:30-6:45pm

Description: Taking inspiration from nature, Applied Deep Learning consists of a variety of artificial neural network architectures designed to learn relationships from data and to exploit the results of that learning for practical applications. Deep learning is making significant contributions to areas ranging from games to autonomous vehicles, including inroads in computer vision, language translation, natural language processing, business, medicine, and the arts. As a project-based, hands-on course, this class will assume a practitioners view of Deep Learning, exploring the principles, facilities, and tool-chains appropriate for applying the technology to a collection of large datasets characteristic of today's Big Data.



Selected Topics: Natural language processing, computer vision, image processing, robotics, sample applications, and A.I.

If you are self-motivated, hard-working, and want to learn cutting-edge machine learning, this is the right course for you!