

Simplified BLUE Workflow for IU Campuses

9/28/2016

- 1) Check and clean the Planner data for your campus.
 - a. Here you decide which courses should or should not be evaluated by selecting them and making sure they are set to EVALUATE.
 - b. Audit your data by downloading the section information, then send them to various schools/depts., etc to validate the accuracy of sections, faculty teaching those sections, etc.
 - c. See http://cs.iusb.edu/~hhakimza/BLUE/1_Administration_Workflows/1_IUSB-BLUE%20WORK%20FLOW%20-%20Planner%20-%20V2.pdf
 - d. And http://cs.iusb.edu/~hhakimza/BLUE/4_Evaluation_Planner/evaluation_planner_guide.pdf
- 2) Create a Test-Cycle Project
 - a. Copy an existing project (perhaps one created by the software vendor, or one adopted by another campus)
 - b. Go through the Following workflow document to adapt it to your campus. http://cs.iusb.edu/~hhakimza/BLUE/1_Administration_Workflows/2_IUSB-BLUE%20WORK%20FLOW%20-%20Project%20-Test%20Cycle%20-%20V6.pdf
 - c. The above workflow will allow you to:
 - i. load your data from Planner (***note that you may have to wait 24 hours for the data adjusted in planner to be loaded into the BLUE data sources), adjust the filters, audit the data***)
 - ii. ***Add or modify questions, triggers, actions,..***
 - iii. ***Adjust the tasks such as form fill out (FO), Question personalization (QP), Subject View Management (SVM) Adjust the dynamic and static start and end points. Adjust the email messages that are sent out for inviting, and reminding, users to perform various tasks.***
 - iv. Create Test groups (students, faculty, etc) for the test cycle and give them privileges.)
 1. HH_Students (FO)
 2. HH_Teachers (QP)
 3. HH_Teachers (SVM)
 - v. Disable the following Groups (remove their privileges for the test cycle)
 1. Students (FO)
 2. Teachers (QP)
 3. Teachers (SVM)

- vi. Select some classes for the test-cycle (or use all of the classes)
- vii. Publish the test-cycle project
 - 1. Set the start/End date of the project
 - 2. Validate Review Errors/Warnings, etc and fix them.
- viii. Review and validate the test-cycle project

Once everything is ok, you can then create a Production Project using the following workflow document.

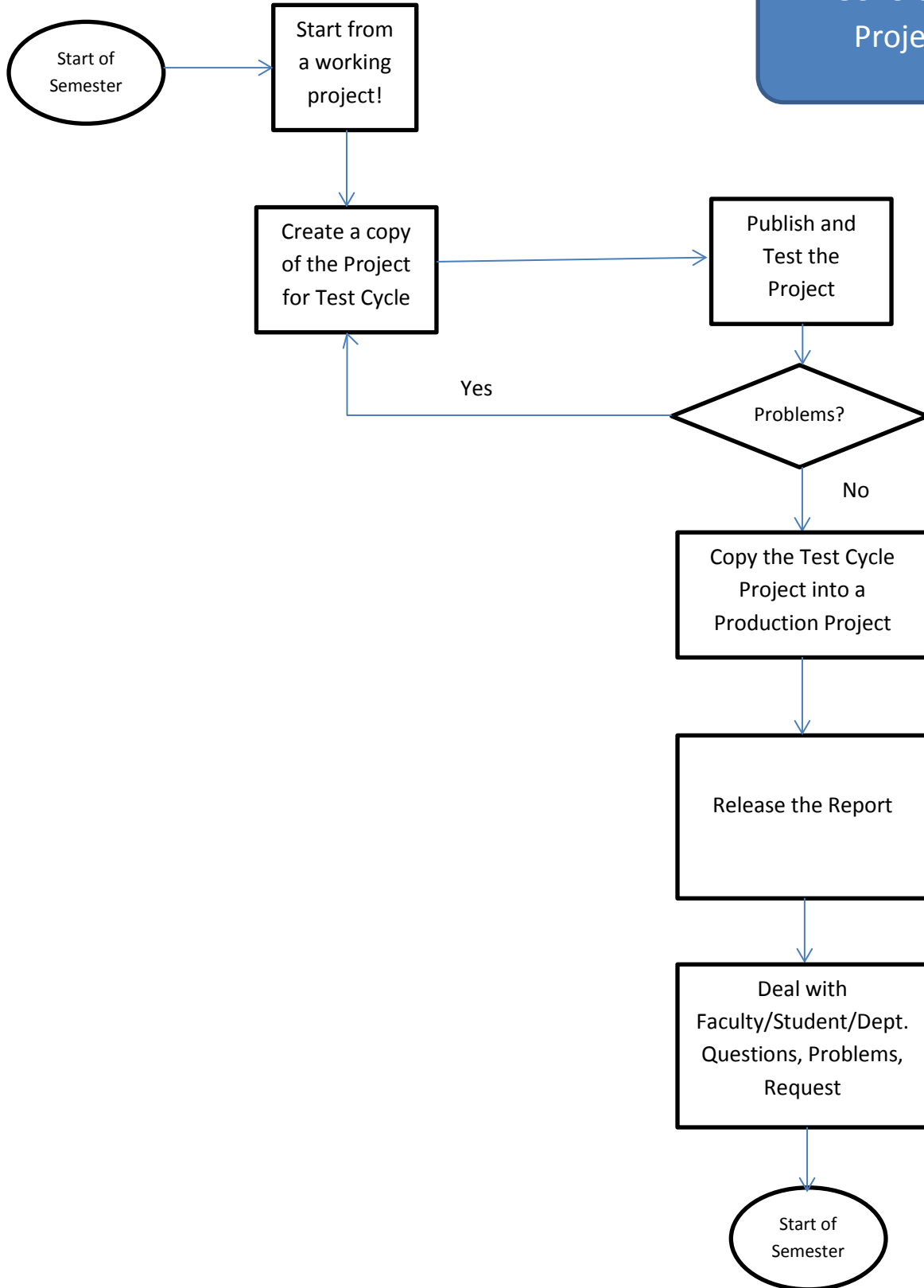
http://cs.iusb.edu/~hhakimza/BBLUE/1_Administration_Workflows/3_IUSB-BBLUE%20WORK%20FLOW%20-%20Project%20-%20Production%20-%20V4.pdf

Additional Resources

<http://cs.iusb.edu/~hhakimza/BBLUE/>

Simplified BLUE Work Flow for IU Campuses

9/28/2016



Simplified BLUE Work Flow for IU Campuses

9/28/2016

